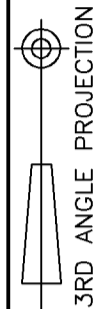


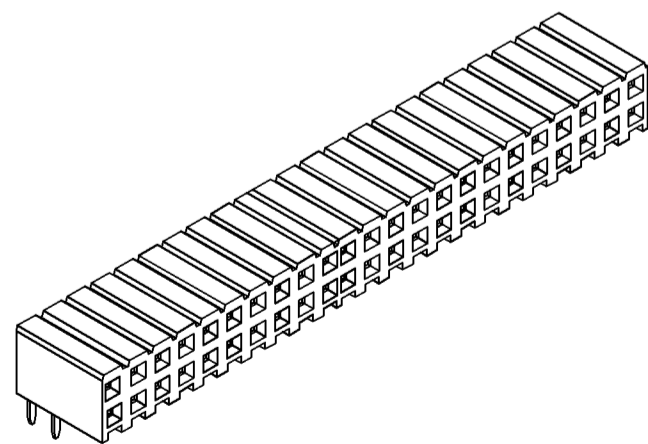
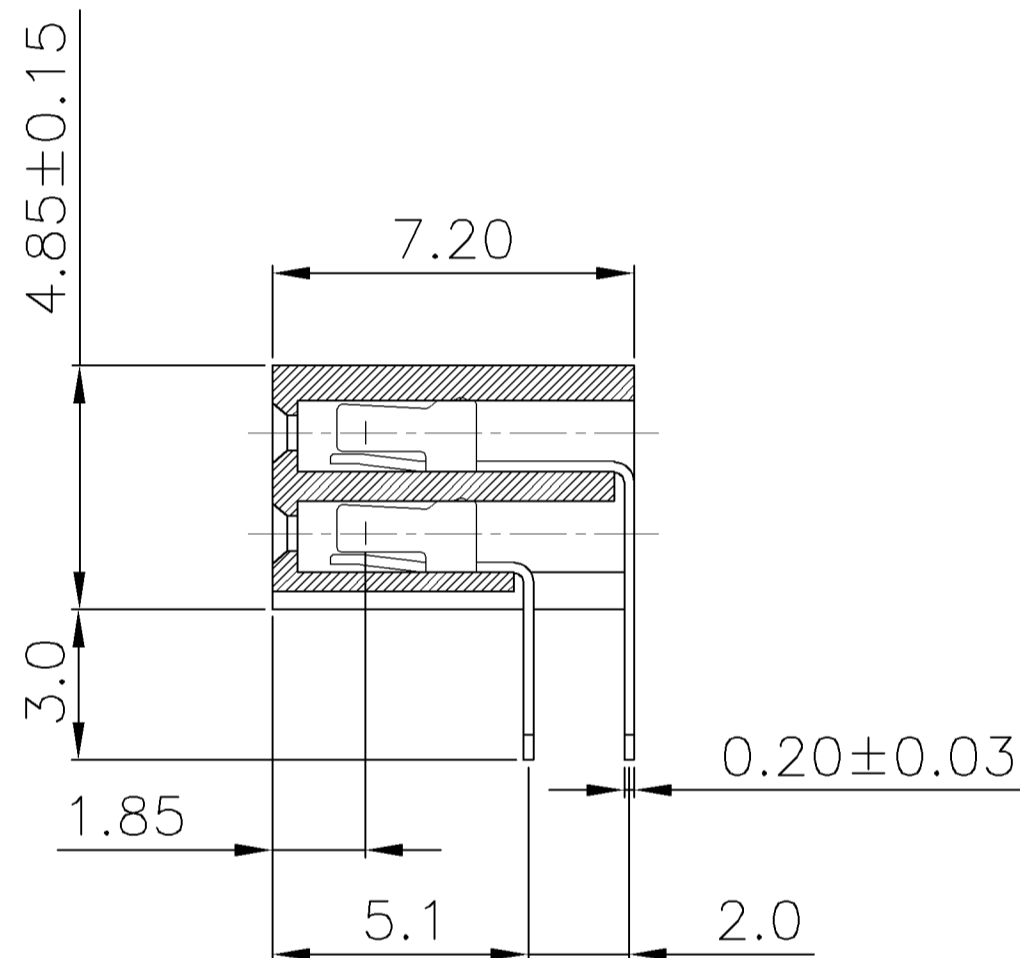
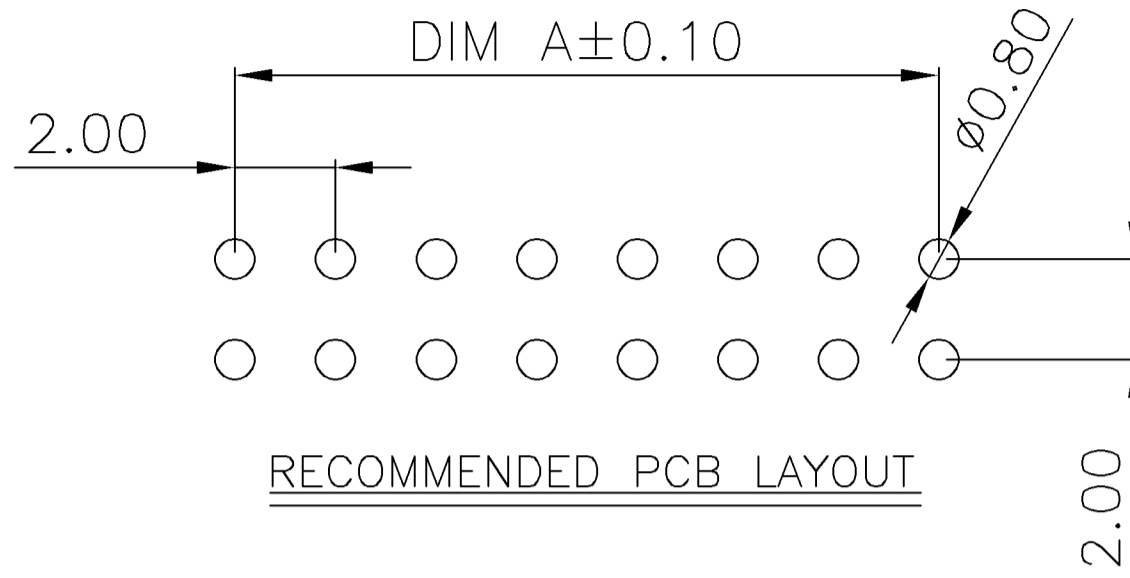
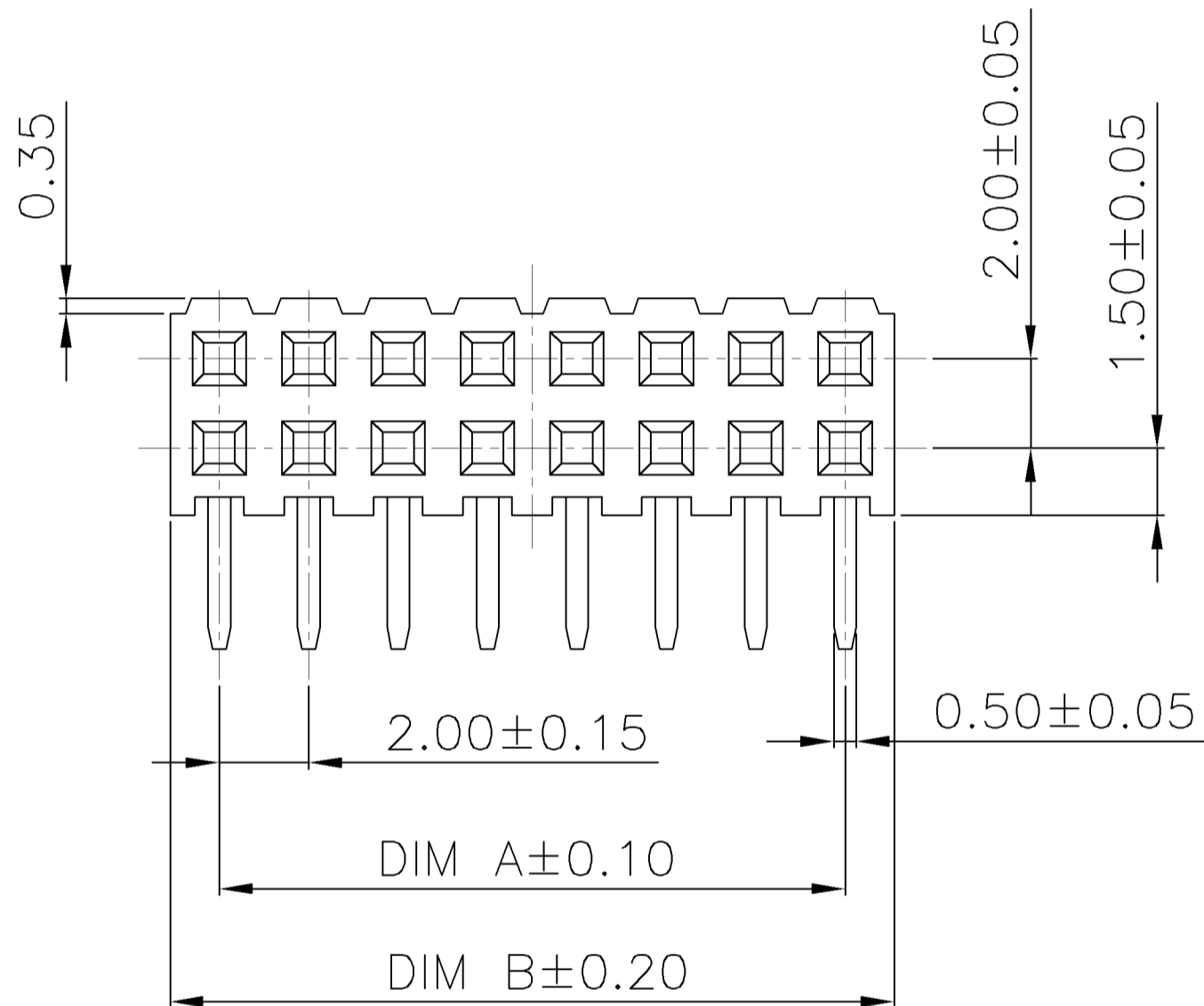
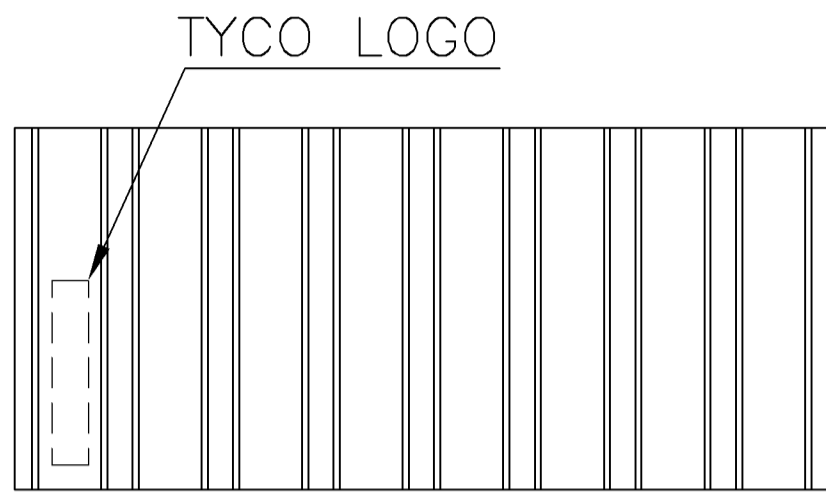
THIS INFORMATION IS CONFIDENTIAL AND IS DISCLOSED TO YOU ON CONDITION THAT NO FURTHER DISCLOSURE IS MADE BY YOU TO OTHER THAN AMP PERSONNEL WITHOUT WRITTEN AUTHORIZATION FROM AMP (TAIWAN) LTD. DIMENSIONS IN MILLIMETERS. DO NOT SCALE PRINT.

PRINT DIST
DW

METRIC



NUMBER
C-1734531



NOTE :

- MATERIAL :
HOUSING : THERMOPLASTIC, UL94V-0, BLACK COLOR
CONTACT : PHOSPHOR BRONZE, THICKNESS=0.20mm.
- FINISH :
CONTACT: 8μ" MIN. GOLD PLATED ON CONTACT AREA
100μ" MIN. BRIGHT TIN PLATED ON SOLDER TAIL,
50μ" MIN. NICKEL UNDERPLATED OVER ALL
- APPLICATION :
SOLDERTAIL LENGTH 2.6 FOR PCB THICKNESS 1.6±0.1
- WAVE SOLDER CAPABLE TO 265°C PER TYCO SPEC 109-202, CONDITION B.

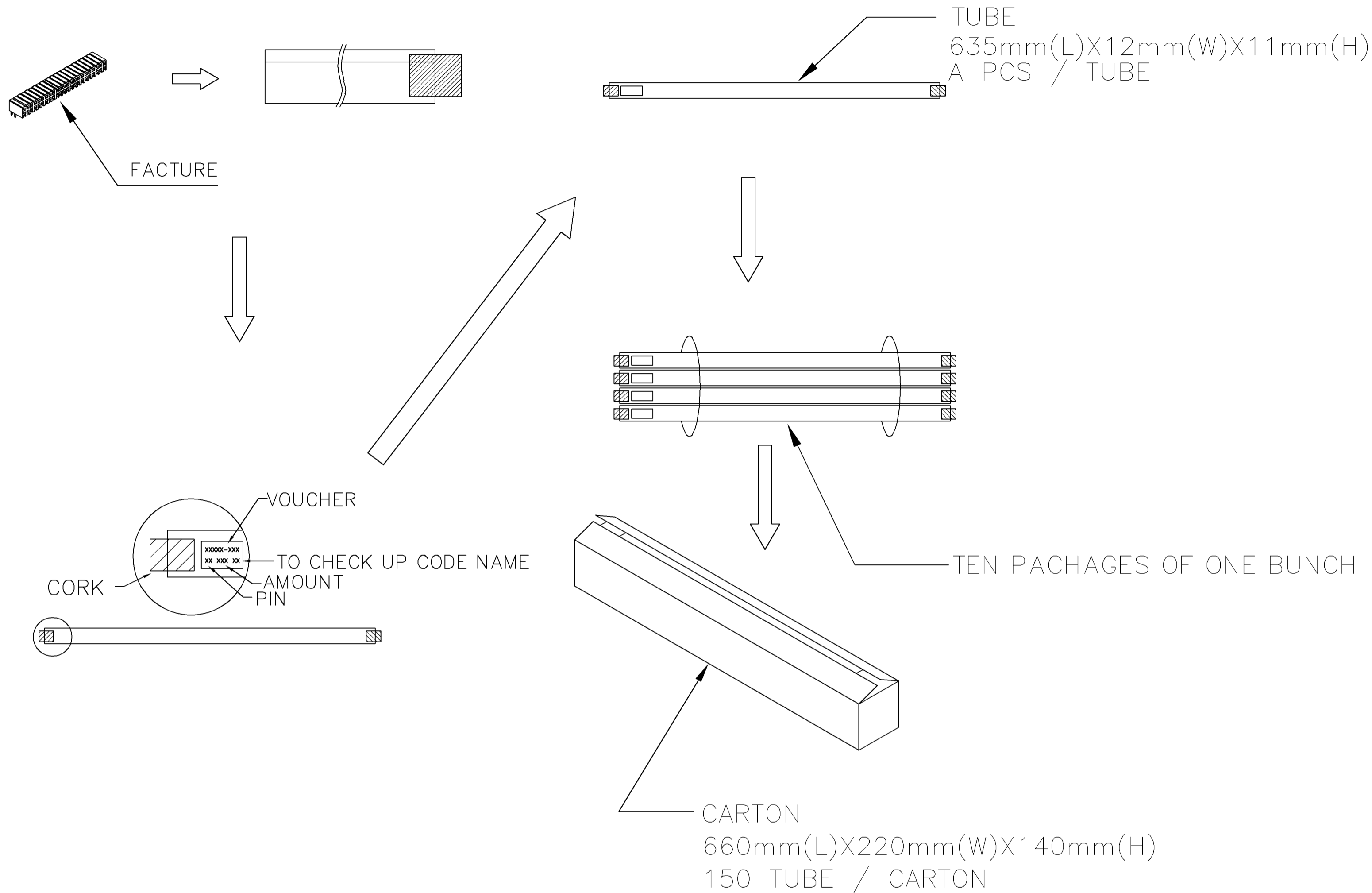
A1	CORRECT ERROR	ECR-07-000406	OH SH	12JAN 2007
A	REVISED	ECR-06-015313	OH SH	23JUN 2006
LTR	REVISION RECORD	ECN	DWN CHK	DATE

TOLERANCES UNLESS OTHERWISE SPECIFIED: 0 PLC ±0.5 1 PLC ±0.2 2 PLC ±0.1 3 PLC ±0.05 ANGLES ±3'		DWN O. HU 10-JAN-2007	TYCO HOLDINGS (BERMUDA) VII LTD. TAIWAN BRANCH	
MATERIAL SEE NOTE		CHK S. HOU 10-JAN-2007	NAME AMP MODU 2.0mm PITCH, RCPT CONN., RIGHT-ANGLE, MOUNT TYPE	
FINISH SEE NOTE		APVD W.J. KE 10-JAN-2007	LOC DW A ₃	SIZE C-1734531
		PRODUCT SPEC 108-57197	DRAWING NO	REV A1
		QUALIFICATION TEST REPORT 501-57197	SCALE	SHEET 1 OF 2
		WEIGHT		

78.00	80.50	80	8-	-0
76.00	78.50	78	7-	-8
74.00	76.50	76	7-	-6
72.00	74.50	74	7-	-4
70.00	72.50	72	7-	-2
68.00	70.50	70	7-	-0
66.00	68.50	68	6-	-8
64.00	66.50	66	6-	-6
62.00	64.50	64	6-	-4
60.00	62.50	62	6-	-2
58.00	60.50	60	6-	-0
56.00	58.50	58	5-	-8
54.00	56.50	56	5-	-6
52.00	54.50	54	5-	-4
50.00	52.50	52	5-	-2
48.00	50.50	50	5-	-0
46.00	48.50	48	4-	-8
44.00	46.50	46	4-	-6
42.00	44.50	44	4-	-4
40.00	42.50	42	4-	-2
38.00	40.50	40	4-	-0
36.00	38.50	38	3-	-8
34.00	36.50	36	3-	-6
32.00	34.50	34	3-	-4
30.00	32.50	32	3-	-2
28.00	30.50	30	3-	-0
26.00	28.50	28	2-	-8
24.00	26.50	26	2-	-6
22.00	24.50	24	2-	-4
20.00	22.50	22	2-	-2
18.00	20.50	20	2-	-0
16.00	18.50	18	1-	-8
14.00	16.50	16	1-	-6
12.00	14.50	14	1-	-4
10.00	12.50	12	1-	-2
8.00	10.50	10	1-	-0
6.00	8.50	8	1734531-8	
DIM A	DIM B	POSITION NUMBER	PART NUMBER	
DIMENSIONS				

THIS INFORMATION IS CONFIDENTIAL AND IS DISCLOSED TO YOU ON CONDITION THAT NO FURTHER DISCLOSURE IS MADE BY YOU TO OTHER THAN AMP PERSONNEL WITHOUT WRITTEN AUTHORIZATION FROM AMP (TAIWAN) LTD. DIMENSIONS IN MILLIMETERS. DO NOT SCALE PRINT.

NUMBER C-1734531
METRIC
3RD ANGLE PROJECTION



7	80	8-	-0
7	78	7-	-8
7	76	7-	-6
8	74	7-	-4
8	72	7-	-2
8	70	7-	-0
8	68	6-	-8
9	66	6-	-6
9	64	6-	-4
9	62	6-	-2
10	60	6-	-0
10	58	5-	-8
10	56	5-	-6
11	54	5-	-4
11	52	5-	-2
12	50	5-	-0
12	48	4-	-8
13	46	4-	-6
13	44	4-	-4
14	42	4-	-2
14	40	4-	-0
15	38	3-	-8
16	36	3-	-6
17	34	3-	-4
18	32	3-	-2
19	30	3-	-0
21	28	2-	-8
22	26	2-	-6
24	24	2-	-4
26	22	2-	-2
29	20	2-	-0
32	18	1-	-8
36	16	1-	-6
41	14	1-	-4
48	12	1-	-2
57	10	1-	-0
71	8	1734531-8	
A	POSITION NUMBER	PART NUMBER	

TOLERANCES UNLESS OTHERWISE SPECIFIED: 0 PLC ± 1 PLC ± 2 PLC ± 3 PLC ± ANGLES ±	DWN	O. HU	tyco TYCO HOLDINGS (BERMUDA) Electronics VII LTD. TAIWAN BRANCH			
	CHK	S. HOU				
MATERIAL SEE NOTE	APVD	W.J. KE	NAME AMPMODU 2.0mm PITCH, RCPT CONN., RIGHT- ANGLE, MOUNT TYPE			
	PRODUCT SPEC	10-JAN-2007				
FINISH SEE NOTE	QUALIFICATION TEST REPORT	---	LOC DW	SIZE A₃	DRAWING NO C-1734531	REV A1
	WEIGHT	---	SCALE	---	SHEET 2 OF 2	

LTR	SEE SHEET 1.	ECN	DWN	CHK	DATE
	REVISION RECORD				